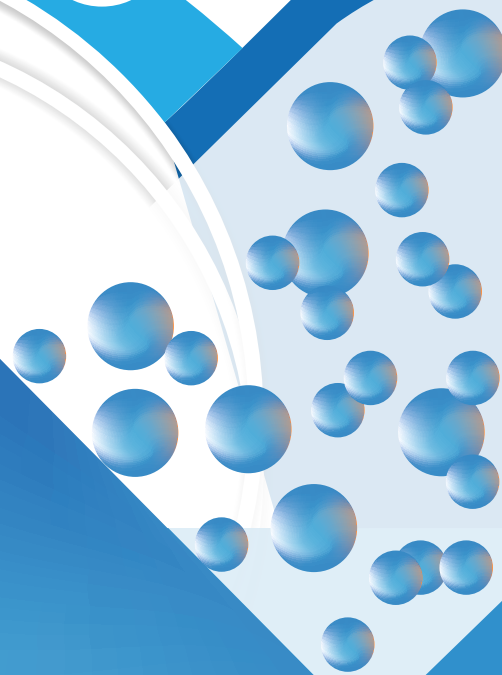




Madhu Pharma Engineers



**Suppliers of
Pharmaceutical
Machines**



**We have a vast global patronage in
Indian & international markets...**

www.madhupharma.com





Liquid Filling Machining



R.O.P.P. Cap Sealing

CHANGE PARTS

Main Cap Hooper	Star Wheel
Cap Channel	Guide Plat

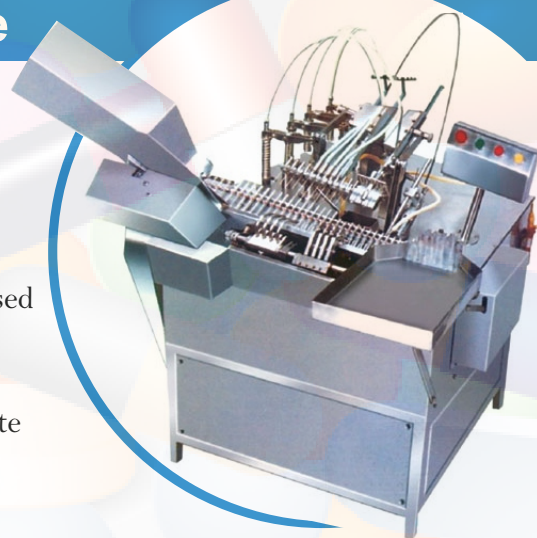
TECHNICAL SPECIFICATION

Model	MPEALF-4	MPEALF-6	MPEALF-8
No. of Head	1	4	6
Max. Out Put / Hour- No. Of Bottles	3000	6000	9000
Electricals Reaquired	440 V, 3 Phase-4 Wire, 50HZ		
Motor - HP	1 HP	2 HP	1 HP & 0.5 HP
Cap Size	18 to 35 mm		
Bottle Height	52 to 200 mm		
Bottle Diameter	30 to 75 mm		

Ampoule Filling & Sealing Machine

SALIENT FEATURES

- ➔ Machine is built on Slant Travel of Ampoules while filling & sealing , to take care of vide variation of ampoule neck dimensions, thickness & ovality of available ampoules as per Indian standard.
- ➔ The unit is built on S.S. Square pipe frame & totally encompassed with S.S. Coverings, in pleasing mat finish with all aesthetic consideration.
- ➔ A large opening provided at bottom side for the ease of absolute cleaning
- ➔ The pendant type electrical control panel is lifted from the machine for ease of operation & safety



Model	MPE-AFS-1	MPE-AFS-2	MPE-AFS-4	MPE-AFS-6
No. of Syringes	1	2	4	6
Out Put Range / Minute	10	10 to 30	40 to 100	60 to 120
Ampoule Size Range	1 to 10 ml.			
Pwer required	1 HP		1.5 HP	



Liquid Manufacturing Machine



ALL EQUIPMENT – CONTACT PARTS S.S. 316 & NON CONTACT PARTS 304 LIQUID MANUFACTURING PLANT IS COMPLETELY CUSTOMIZED PLANT, PLS LET US HAVE YOUR DETAILED REQUIREMENT TO ENABLE US PROVIDING YOU OUR BEST SUITED SOLLUTION.

Description Of Equipment	MOC
Manufacturing Vessel	316/304
Melting Vessel	316/304
Storage Tank	316/304
Filter Press	316/304
In-Line Homogenizer	316/304
Piping & Other Accessories	316/304
Transfer Pumps	316/304
Working Platform	304

TECHNICAL
SPECIFICATION

Bottle Washing Machine



Model	MPEBW64	MPEBW96
Out-Put-Bottles/Hour-Max.	6000	9000
No. of Container Holders	64	96
Electricals	415V, 50HZ, 740 RPM	
Main Drive Motor-1 Qty	0.5 HP	
Pump Motor-2 Qty	1.0 HP	
Tanks	2 Qty - 75 Ltrs.	
Centrifugal Pump	2 Qty - 3/4"	
No. of Spray Nozzles	16	24
Round Bottle Neck Dia	15 to 30 mm	
Square Shape Bottle Dim.	Min. - 30x10x60 mm	
	Max. - 100x50x200 mm	

TECHNICAL
SPECIFICATION

Automatic Liquid Filling Machine



Model	MPEALF-4	MPEALF-6	MPEALF-8
Out-Put-Bottles/Hour-Max.	4000	6000	8000
No. of Syringes / Heads	4	6	8
Machine Capacity	Filling range of machine is 30-1000ml, the filling range depend upon the syringe attached the machine		
Electrical Specification	1.5 HP	1.5 HP	2.0 HP
Main Drive Motor-1 Qty	0.5 HP	0.5 HP	1.0 HP
Conveyor Electricals	Adjustable 860-910 mm		
Conveyor Height	6 to 8 Feet x 90 mm		
Length of Conveyor	Syringes / Nozzles / Flexible Hoses		
Change Parts	<ul style="list-style-type: none"> • 30 ml to 100 ml • 50 ml to 250 ml • 250 ml to 550 ml • 500 ml to 1000 ml 		

Completely Automatic Volumetric Four Heads / Six Heads Liquid Filling Machine, is used in industries Pharmaceuticals, cosmetics, beverages to fill the Liquid or semi liquid in the desire volume in the varying type of Pan/Bottles E.g. Flat/Oval/Square/Round shaped products having PET, Plastic, HDPE, LDPE, Glass or any other surface.

It's used to reduce the human interference & to get higher productivity out put. It is generally used to get out put above 2400 Bottles/Hour up to 12000 Bottles/Hour out Put.

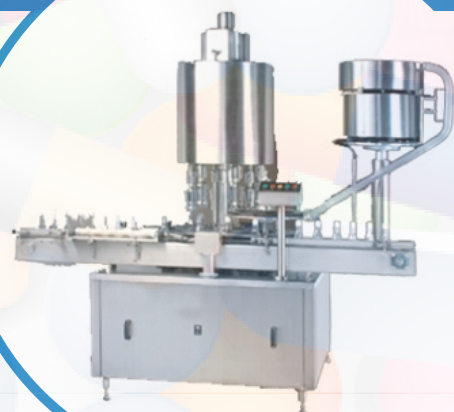
Automatic Screw Capping Machine

CHANGE PARTS

- Main Cap Hooper
- Cap Channel
- Star Wheel
- Guide Plat

TECHNICAL SPECIFICATION

Model	MPEALF-4	MPEALF-6	MPEALF-8
No. of Head	1	4	6
Max. Out Put / Hour- No. Of Bottles	3000	6000	9000
Electricals Reaquired	440 V, 3 Phase-4 Wire, 50HZ		
Motor - HP	1 HP	2 HP	1 HP & 0.5 HP
Cap Size	18 to 35 mm		
Bottle Height	52 to 200 mm		
Bottle Diameter	30 to 75 mm		



Glue Labeling Machine

Madhu MHL-150 Automatically Labels on round container of glass & plastic with wrap around labels and also flag type in the vertical position by using cold glue. SHL-150 is rigid, versatile and engineered for reliability and enhance operational efficiency in addition, it has several exclusive feature which offer additional advantages.

TECHNICAL SPECIFICATION

Model	MHGL-150
Direction of Movement	Left to Right
Out Put / Hour	3000 to 9000 Containers / Hour
Un Scramble	762 mm Diameter (Synchronized main motor)
Electrical Rating	1 HP- Mail Motor, 0.5 HP- Vacuum Pump
Over All Dim.	3000 x 1061 x 750 to 840 mm Adjustable Height
Net Weight	580Kgs.

SALIENT FEATURE

- S.S cladding of all exposed parts to ensure long life and to resist corrosion.
- S.S. elegantly matt finished body.
- S.S. slat conveyor.
- Minimum change over time.
- Digital pulse counter.
- Suitable for overlap and flag type labeling.
- Suitable for glass, pet, HDPE bottle.
- No container no label system.

INPUT SPECIFICATION

Round container diameter:16 to 90 mm

Label:Length 20mm. to 140 mm. (in special case up to 160 mm.)

Width 16 mm. to 90 mm

Sticker Labelling Machine

UNIQUE FEATURES

- No Label Data Input/retrievals require for any Label Size
- No Change Parts for Label size
- Easy to change label application height on product
- Virtually Maintenance free machine
- User Friendly Label Placing Adjustments
- Suitable for On-Line Ink Jet and Contact Coding System
- Suitable for Partial, Full Wrap Around and Overlap Labeling
- Fully Stainless Steel Cladding Machine.



Label Height	8 mm to 90 mm Standard
Label Length	12 mm Minimum
Label Roll Diameter	305 mm
Core Diameter	75/76 mm
Electrical	220 VAC, 1 Phase, 50/60 Hz
Power	1.5 Amp
Capacity	0.5 KW
Speed	Up to 100 Labels per minute depending on product & label Size
Conveyor Height	760-840 mm
Overall Dimensions	1825 mm (L) *715mm(W)*1550mm (H)

TECHNICAL SPECIFICATION

Model	MPE-150
Direction of Movement	Left Right
Out Put / Hour	3000 to 9000 Containers / Hour
Label Width	20 to 120 mm Standard*
Label Length	80 to 200 mm Minimum
Label Roll Diameter	305 mm
Core Diameter	75/76mm
Electrical	220 VAC, 1 Phase, 50/60 Hz
Power	1.5Amp
Capacity	0.5KW
Speed	Up to 100 Labels Per minute depending on product & Label size
Conveyor Height	760-840 mm
Overall Dimension	1825mm (L)*715mm(W)*1550 mm(H)



Inspection Table



Technical Specification

Model Speed	MPEI-20- 100 Container/minute & MPEII-50- 150 Container per minute
Number of operator	Three & four
Power	0.5 h.p.

Multi Jet Washing Machine

Madhu Multi Jet Washing Machine is specially designed to cater the application of VIAL & AMPULE washing both as multipurpose washing machine.

The machine is enclosed in S.S Construction with a flexibility to wash 1 ml to 20 ml ampoule & 2 ml to 100 ml vial with the help of suitable change parts. The standard unit is having mechanical motorized cam operated valve system for observing total six washing in one cycle.



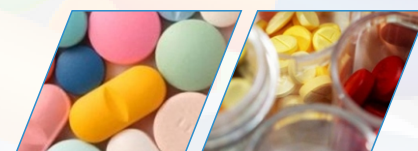
TECHNICAL SPECIFICATION

OUTPUT

Washing Cycle Time	60 Seconds (Approximately – Can Be Customize)
No. Of Cycles/ Hour	25 to 30 (Depend Upon the Speed of Operator or Method Of Loading & Un-Loading)
Electricals	0.25 HP, 415 V, 3 Phase-4 Wire, 50 Hz

UTILITIES REQUIRED

Air	Filtered @ 5 Micron & Pressurized @5 Bar (For Air Washing)
Fluid	Continuous Flow (For Cleaning Through Fluid E.g. D.M. Water)



Multi-jet Needle Plate	Maximum Ampoule Size (ML) Upto	Maximum Vial Size (ML) Upto	Maximum Output / hour
432	001	NIL	12960
340	005	002	10200
240	010	003	7200
188	Any Size	010	5640
100	Any Size	30	3000
056	Any Size	100	1680

Internal / External Washing	Medium of Washing
1st Stage	D.M. Water
2nd Stage	D.M. Water
3rd Stage	Air
4th Stage	Distilled Water
5th Stage	Air

Packing Conveyor



Technical Specification

GMP Model	MOC S.S. 304 & PVC
Length of Conveyor	10 Feet / Customized
Conveyor Width	12" (Or Customized) With Side Tablet MOC S.S. 304
Motor	0.5 HP, With Gear Box, Speed Control Easy AC VFD Speed Control



Turn Tablet

- Exposed parts – claded Aluminum to avoid rusting.
- Reduction gear to ensure jerk free noiseless performance and allows absolute cleanliness even inside.
- Turn table is used in plant to make the input or collect the out put container inline with the machines either liquid filling or cap sealing or labeling machine uniformly and continuously even in absence of the operator.

TECHNICAL SPECIFICATION

Model	MPE-24	MPE-30	MPE-36	MPE-42	MPE-48
Suitable For	Vials, Bottles & Round Containers				
Std. Sizes	24"	30"	36"	42"	48"
Electrical Load	0.5 to 1.5 HP Depend Upon Size . Single phase / 230 Volt / 50 Hz / A.C.				
Gear Box	1.25":40:1 Gear Ratio				





Capsule Filling Machine

Size: 300 holes

Output: 300 capsule/cycle**

Overall: 460 X 460 X 560(H) mm²

CAPSULE LOADER M/C.

Motor: 3 phase , 0.25 Hp.

Size: 300 holes**



SALIENT FEATURES

- Machine Fabricated From S.S Sheets With G.M.P Requirements.
- High output of polished, shiny and clean Capsules can be achieved.
- Infinitely variable vibrator Speed to control capsules flow.

TECHNICAL SPECIFICATION

Out Put	20,000 To 25,000 Cap. Per Hour
Drive Motor Polishing Scetion	½ H.P
Polishing Chambers	One
Space Required	5'X3'X6'
Power required	440 Volts, 3 Phase



Madhu Pharma Engineers



**Suppliers of
Pharmaceutical
Machines**

Tablet Section Machineries





Tablet Compression Machines

1

TABLET PRESS- HIGH SPEED



Mini Tablet Press



Single Rotary Machine



Heavy Duty Tablet Press



DE-BURRING & DE-DUSTER

2



3

DUST EXTRACTOR





Ganulation Equipments

1

RAPID MIXER GRANULATOR

Rapid Mixer Granulator – The High Shear Mixer/Granulator is a multi-purpose processor equally suitable for high speed dispersion of dry powders, aqueous or solvent granulations, and effervescent products and melt pilletization.

OPERATION

Excellent mixing and consistent granulation is achieved along with higher productivity. Safe operation and easy thorough cleaning facility improves product quality and achieves lower operating cost. Better mixing and close control of granule size leads to faster tableting speeds with improved quality and least rejections.



ROLL COMPACTOR

“Madhu” Roll Compactor is designed for the densification and granulation of powder for the pharmaceutical industries in particulars and food and chemical industries in general. It is also ideal for batch or continuous processing variety of materials.



3

OSCILLATING GRANULATOR

Mechanical process in which the product is pressed through a sieve with a specially shaped rotor-arm to obtain a desired particle size. This process results in a narrow distribution spectrum as only the product having the right shape, size & position is broken & passed through the sieve. In tablet making, the process of granulation plays a vital role because the quality of the final tablet will depend on the quality of granules used for its compression. Most suitable for production of granules from wet and dry material. The quality of granules are better compared to other processing machineries such as Multi Mill, comminuting Mill. A unique Oscillatory rotor ensures high out put and efficient granulation .

2



MASS MIXER



Mass Mixer has been well designed to facilitate through mixing of dry or damp materials and is especially suitable for tablet granulation. The power full geared drive and sturdy mixing paddle make it ideal for dealing with difficult or sticky ingredients. This is one speed mixer but two speed machines are also available on demand.

CONSTRUCTION

The mixer consists of a mixing drum complete in it self. It contains mixing drum body, mixing paddle arrangement and sealing arrangement. The bed rests on rigid M.S fabricated body carrying motor, gear box, starter and tilting arrangement.

The drive of mixing paddle is through suitable oil immersed worm gear unit which in turn get drive through "V" belts from suitable Motor. The blades of the paddle are so arranged that through mixing is obtained. The blades of the paddle are in direct contact with the material to be mixed are of SS. The main paddle runs in journals and supported by thrust bearings of ample size to carry end thrust load. The design of the mixing drum makes cleaning easier.

TECHNICAL SPECIFICATION

Model No.		MPMMx-50	MPMMx-100	MPMMx-150	MPMMx-200
Capacity		50 Kgs.	100 Kgs.	150 Kgs.	200 Kgs.
Over Flow Capacity		120 Liters	220 Liters	330 Liters	440 Liters
Working Capacity		100 Liters	156 Liters	230 Liters	300 Liters
Speed of Stirrer		26/28 RPM	35 RPM	30 RPM	30 RPM
Motor		2 Hp	5 Hp	7.5 Hp	7.5 Hp
Electrical		3 Phase, 4 Wire, 50 Hertz			
Gear Box		3" / 4" Depend Upon The Application			
Dimension	Length	1700	2030	2200	2300
	Height	800	1120	1200	1300
	Width	900	635	800	800



Particle Size Reduction Machines

1

MULTI MILL

TECHNICAL SPECIFICATION

MULTI MILL MODEL	MPE-MM-PROD.	MPE-MM-LAB-R&D
Maximum out put / hour	200 Kgs.	30 Kgs.
Electricals	415V, 50 HZ, 1440 RPM	
Motor	3HP	0.5HP
Starter	Star-Delta, No Load & Over Load Protector	
No of Beater	12 Nos.	8 Nos.
Change Parts	S.S. Perforated Screen (Holes Dia mm)(a)0.5,1.0,1.5 Sizes (b)2,3,4,5,6 © 7,8,10,15,20,25 S.S. Wire Mesh Sieve, (a)4,6,8,10,12,14,16,20,24,30,40,50,60 (b)80,100	
Optional Features	Belt Less Multi Mill FLP Electricals VFD Speed Controls	



PULVERISER

2

3

COMMINUTING MILL





Seiving Sifting Equipments

1

MULTI MILL

TECHNICAL SPECIFICATION

MULTI MILL MODEL	MPE-MM-PROD.	MPE-MM-LAB-R&D
Maximum out put / hour	200 Kgs.	30 Kgs.
Electricals	415V, 50 HZ, 1440 RPM	
Motor	3HP	0.5HP
Starter	Star-Delta, No Load & Over Load Protector	
No of Beater	12 Nos.	8 Nos.
Change Parts	S.S. Perforated Screen (Holes Dia mm)(a)0.5,1.0,1.5 Sizes (b)2,3,4,5,6 © 7,8,10,15,20,25 S.S. Wire Mesh Sieve, (a)4,6,8,10,12,14,16,20,24,30,40,50,60 (b)80,100	
Optional Features	Belt Less Multi Mill FLP Electricals VFD Speed Controls	



VIBRO SHIFTER

2

TECHNICAL SPECIFICATION

Model No.	MPLAB12	MPVS20	MPVS30	MPVS36	MPVS48
Machine Size	12"Modell	20" Model	30" Model	36" Model	48" Model
Mesh Size	12"	20"	30"	36"	48"
*OutPut - Kgs./Hour	5 to 20	50 to 200	50 to 300	300 to 400	300 to 500
Motor Type - Vibro	0.25 HP	0.5 HP	1 HP	1/1.5 HP	2 HP
Electrical Utilities	440 V / 50 Hz/ 3 PH-4 Wire / A.C.				
Optionals	FLP N.A.	FLP Electrical / Deck-Single/Double/Triple Deck			



3

MECHANICAL SIFTER



Blending & Mixing Equipments



1

DOUBLE CONE BLENDER

The Double Cone Blender is an efficient and versatile machine for mixing dry powder and granules homogeneously. The effective volume for optimum homogeneity is between 35-70% of gross volume. The SLANT double cone design eliminates dead sports, which occasionally occur in conventional double cone mixer. It can be used for pharmaceutical, food, chemical and cosmetic products etc.



RIBBON BLENDER

2

Mass Mixer has been well designed to facilitate through mixing of dry or damp materials and is especially suitable for tablet granulation. The power full geared drive and sturdy mixing paddle make it ideal for dealing with difficult or sticky ingredients. This is one speed mixer but two speed machines are also available on demand.



3

V BLENDER

The Double Cone Blender is an efficient and versatile machine for mixing dry powder and granules homogeneously. The effective volume for optimum homogeneity is between 35-70% of gross volume. The SLANT double cone design eliminates dead sports, which occasionally occur in conventional double cone mixer. It can be used for pharmaceutical, food, chemical and cosmetic products etc.

- Dry powder mixing for tablets and capsule formulations
- Dry granules sub lots mixing to increase the batch size at bulk lubrication stage of tablet granules.





Encapsulation Machine

1

BLISTER PACK MACHINE

A fully automatic integrated system with high precision mechanism for Tablets, D.S, Capsules, Hard/Soft gelatin Capsules OR Any similar product of 12mm (Cavity depth) X 100 mm (Length) X 25mm (Width) Packing. Versatility of this equipment suits your total packaging needs.



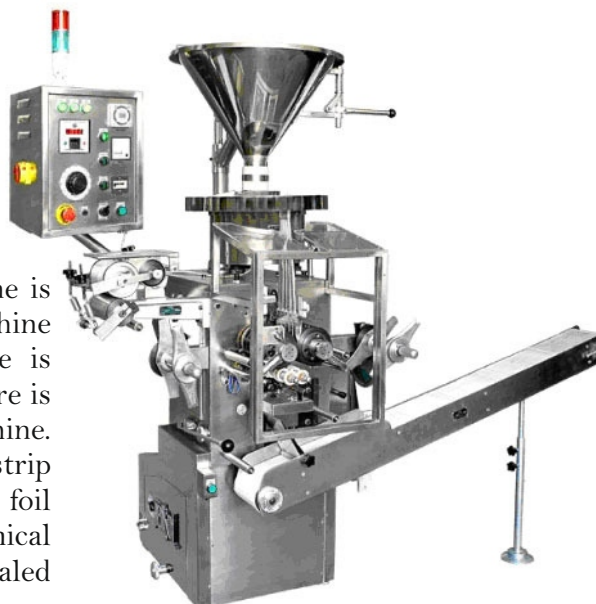
DE-BLISTERING MACHINE

De-Blistering Machine is used for empty finished blisters which have been rejected from the packaging line because of empty pockets, poor seals, incorrect batch coding etc. The good product can then be re-packaged to increase yield and reduce wastage costs. Easy to operate and ensures safe and efficient recovery of filled products.

3

STRIP PACKING MACHINE

Strip Packing Machine is also known as strip pack machine is widely used for pharmaceutical packaging. Strip packing machine is applicable for tablets, capsules. Strip packing machine is available in 2 tracks, 4 track for different output speed. There is perfect sealing of pills, tablets in strip packing machine. Pharmaceutical machine category consist major use of strip packing machine suitable for automatic double-aluminum foil packing for tablets and pills in medical medicine, chemical industry, foods etc industry, achieving the requirement of sealed anti-shine, and also it can be used in double plastic packing.





Coating Equipments

1

COATING PAN

TECHNICAL SPECIFICATION

Model	12"	30"	36"	42"	48"	60"	72"
Loading Capacity-Kgs.	2	45	80	100	150	210	275
Motor - HP	1.0	1.5	1.5	2.0	2.0	5.0	5.0
Pan - RPM	13 to 33			10 to 25			8 to 12
Blower Motor- HP	0.3	0.3	0.3	0.5	0.8	1.0	1.5
Blower Capacity- Max. CFM	90	90	90	90	90	150	150
Pan Mounting Angle	30'						
Heate Capacity-KW	1.5					3	



COLLOID MILL MACHINE

Colloid Mill Machine is suitable for Homogenizing, Emulsifying, Dispersing, Mixing, Comminuting of liquids to highly viscous products. It is based on rotor and stator principle. It's available in plain as well as water jacketed model which is suitable for heat sensitive product. In your case as required the machine will be of water jacketed type.

3

AUTOMATIC COATING MACHINE

Coating pellets, granules and tablets with various medium

- Film coating with organic solvent
- Film coating with aqueous coating
- Sugar coating





Semi Automatic Liquid Filling Machine

1

SEMI AUTOMATIC LIQUID FILLING MACHINE

Semi Automatic Liquid Filling Machine is used in industries Pharmaceuticals, cosmetics, beverages to fill the Liquid or semi liquid in the desire volume in the pan/bottle. Specially to the companies require output maximum up to 800-900 Bottles/Hour, semi automatic machine finds its application



Model No.	MPESLF-2H
Machine Capacity	Fillingrange of machine is 30-1000 ml, the fillinh range dependupon the syringe attached to the machine
Bottles Output/Hour	800 to 2400 Bottles (For Fill Size < 850 ml) 300 Bottles (For Fill Size > 850 ml)
Power Supply	A.C, 415V., 3Phase-4 Wire System, 50 HZ
Electrical Motor	0.5HP / 1 Hp.
Change Parts For varieties of Fill Sizes	Syringes Nozzles Flexible Pipings
Syringe Range	Syringe range: <ul style="list-style-type: none"> • 30ml to 50 ml • 50ml to 100 ml • 100 ml to 250 ml • 250 ml to 500 ml • 500 ml to 1000 ml



Madhu Pharma Engineers



Address : D-12, Zaveri Industrial Estate,
Opp. Kesav Bag Society,
Kadhavada Road, Ahmedabad - 382430

Mobile :

Navneet Patel : +(91)-97233 41142

Naresh Patel : +(91)-93286 14012 , 9898897589

Email Id : madhupharmaengineers@yahoo.in



www.madhupharma.com